

# INSTALLATION INSTRUCTIONS

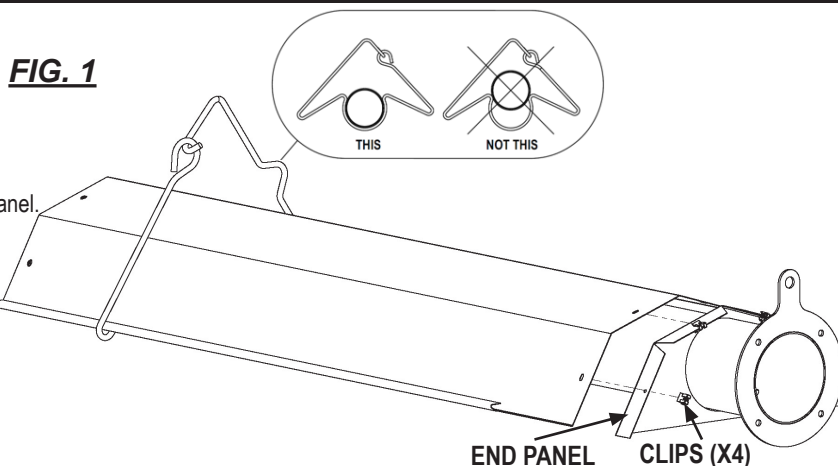


## Mini-T Tube Heater Shroud Assembly

View these instructions online at [www.lbwhite.com](http://www.lbwhite.com)

### Assembly Installation:

1. Ensure you have a clean, flat working surface.
2. Place the shroud on the work surface.
3. Using the old hanger, insert it onto the shroud from the end without the end panel.
4. Slide the hanger through the shroud to about 7.5 inches from the other end.
5. Insert the end panel as shown in Fig. 1.
6. Attach the end panel to the shroud with the clips (x4).
7. Slide the tube through the end panel.
8. Ensure the tube is properly seated in the hanger. See Fig. 1.
9. Attach the tube & shroud assembly to the burner box.



**WORLD PROVIDER - INNOVATIVE CLIMATE SOLUTIONS**

150-134212 REVA

411 Mason Street, Onalaska, WI 54650 • 800-345-7200 • 608-783-5691 • 608-783-6115 (fax) • [www.lbwhite.com](http://www.lbwhite.com)

# INSTALLATION INSTRUCTIONS

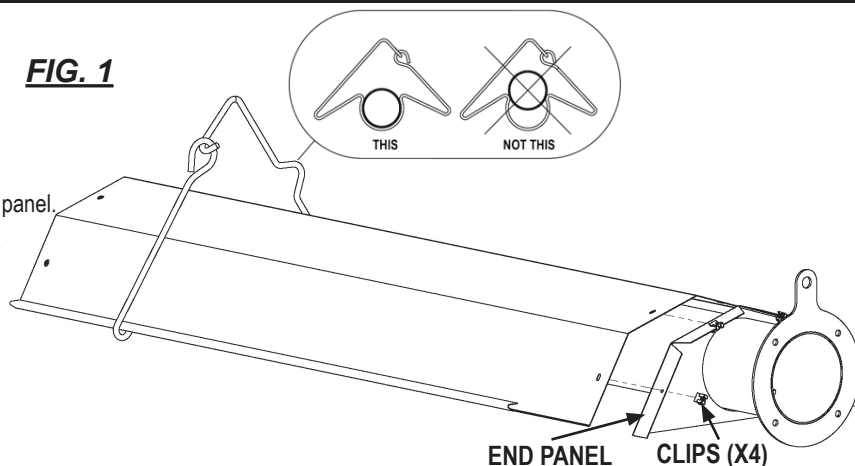


## Mini-T Tube Heater Shroud Assembly

View these instructions online at [www.lbwhite.com](http://www.lbwhite.com)

### Assembly Installation:

1. Ensure you have a clean, flat working surface.
2. Place the shroud on the work surface.
3. Using the old hanger, insert it onto the shroud from the end without the end panel.
4. Slide the hanger through the shroud to about 7.5 inches from the other end.
5. Insert the end panel as shown in Fig. 1.
6. Attach the end panel to the shroud with the clips (x4).
7. Slide the tube through the end panel.
8. Ensure the tube is properly seated in the hanger. See Fig. 1.
9. Attach the tube & shroud assembly to the burner box.



**WORLD PROVIDER - INNOVATIVE CLIMATE SOLUTIONS**

150-134212 REVA

411 Mason Street, Onalaska, WI 54650 • 800-345-7200 • 608-783-5691 • 608-783-6115 (fax) • [www.lbwhite.com](http://www.lbwhite.com)